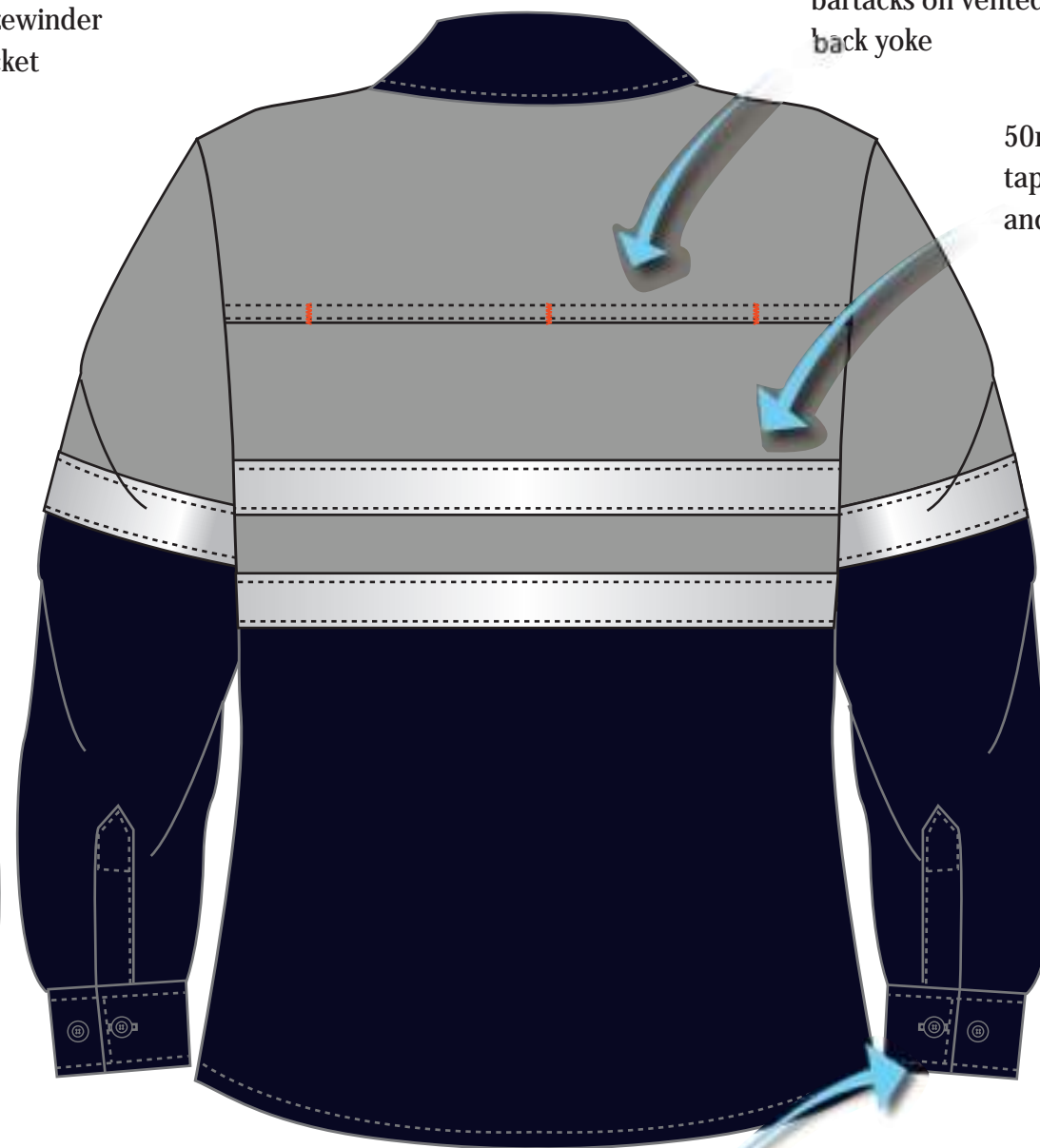


mesh on inside of back vented yoke

BLAIZE branded sizewinder on chest patch pocket

bartacks on vented back yoke

50mm reflective tape on front back and sleeves



cuff and gauntlet fastening

TEXTILE

2/1 Twill
100% Cotton
UV Protect
135gsm

COLOURS

Navy/Grey

Navy/Yellow

Navy/Orange

BLAIZE 2-TONE VENTED SHIRT

28 May 2013



BLAIZE 2-TONE VENTED SHIRT
28 May 2013



MEASUREMENTS

	XS	S	M	L	XL	2XL	3XL	4XL	5XL
CHEST	106	114	122	130	138	146	154	162	170
BACK LENGTH	80	82	84	86	88	90	92	94	96
SLEEVE LENGTH	64	65	66	67	68	69	70	71	72
CUFF	25	26	27	28	29	30	31	32	33

FRONTS:	R.H.S 2.5CM FOLD ON FRONTING L.H.S FRENCH FOLD ON FRONTING
BACK:	LAYED ON YOKE WITH MESH UNDERNEATH, OPENED VENTS. BARTACKED 5CM FROM SIDES AND CENTRE
COLLAR:	DOUBLE STITCHED
CUFF:	X 2 DOUBLE STITCHED, HAS 2 BUTTONS
POCKETS:	X 2 POCKETS, DOUBLE STITCHED , MITRED
FLAPS:	X 2 FLAPS, DOUBLE STITCHED , MITRED
SLEEVE:	HAS GAUNTLET AND CUFF
LOOP:	8CM FINISH IN LENGTH AT CENTRE BACK
POSTING:	SHOULDER, ARMHOLE, UNDER ARM SLEEVE AND SIDE SEAM
REFLECTIVE TAPE:	ACROSS FRONTS, BACKS. POCKETS AND SLEEVES

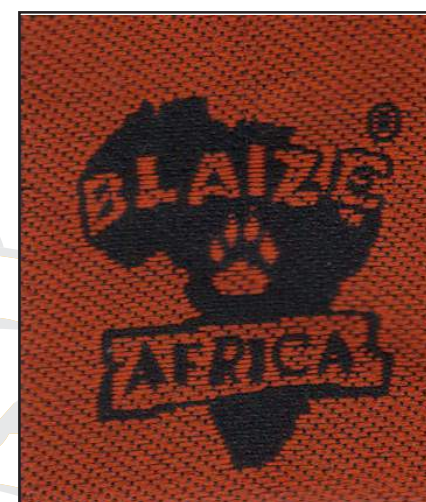
BLAIZE 2-TONE VENTED SHIRT

28 May 2013

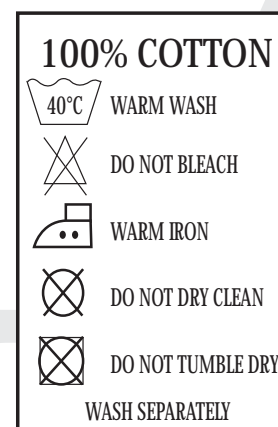


LABELS

SIDEWINDER:	L.H.S POCKET
BUTTONS:	TO HAVE MATCHING BUTTONS AS PER SAMPLE
NECK LABEL:	CENTRE BACK BELOW LOOP, 3.5CM FROM NECK
WASH CARE:	BELOW LABEL
SIZE TAG:	BELOW LABEL
I.D LABEL:	BELOW LABEL
C.D LUX:	R.H.S UNDER BOTTOM TAPE blz 380 CD



BACK NECK LABEL
3cm x 3.5cm



WASHCARE LABEL



SWINGTAG
8cm x 5cm



SIDE WINDER
3CM X 2CM

BLAIZE 2-TONE VENTED SHIRT

28 May 2013